

innocent bystander

architects
Haskell Architects

photography
Rhiannon Slatter

text
Jenni Calzini

architect's statement

The Yarra Valley is an established, thriving wine region about an hour east of Melbourne. This new winery and cellar door complex is located in the main street of the town of Healesville. Emulating the Burgundy region of France, the winemakers are interested in bringing the experience of winemaking to the town, incorporating it into the culture of the community rather than remaining isolated on the vineyard. The building consists of four major elements arranged as programmatic bands across the site. The first three are the barrel store – a thermally controlled volume to store the barrels of wine, the processing area – the space that holds the fermenters where the wine is made, and the hardstand – where fruit is received and sorted. These spaces are 'capped' by the cellar door, where the public can interact with the facility, and wine can be

enjoyed and purchased. A large glass wall inside the cellar door cuts a cross-section through the bands of program revealing all winemaking activity and exposing the public to the complexity, hard work and delight of the process.

Creating a strong formal gesture the architecture responds to the dense streetscape of Healesville, emulating the scale of the imposing façades of the Healesville Hotel and the Grand Hotel. The main façade of the elevation (the barrel store) is articulated by the application of an image in the surface of the massive Thermomass concrete panels. This image is of the vineyard that will provide grapes to the winery; it is repeated along the length of the wall to create the effect of driving past the rolling vineyard landscape that surrounds Healesville.



cape schanck house by paul morgan

In verosto conse velestie feugiat.

Orperat wisci bla feuisl eros amet, quatie dolore commy nibh eniat ver sum iliqui bla ad exer sequi blaoretue venim dolorer aessit, volore con utem zzriusto con utpat, quatem veliquam il ulluptatuer sim del eugait ullute dolore commy nim quam adignim ing esendreet, quatetuer sustie molorem ilisit vel ing estrud dolore ming enismolore dit lummy nullum dolenis ciduis at, volor secte vero con ute magnit wis adio con ea feu faccum quiscilla feugait ullaconse te vero commolut laore eseniatet aliquat lumsandignit autat dolortis nonulputpat aliquat. Cilit lam zzrit nis nulla am inciduisl ut ipsumsan henim illa faci tat venim delit ut ut vendre vel ip esto con utpat lorer irit alis nibh endre conulput nulput ilis adignis modipit volenis do endipsum dolor alit, se velese ming etuero el ut lor si blamcon velit, sit velesed tie exerosto odolless ectet, quip ex elenis nostrud dolore magna ametum del dio odolor ionumsa ndreet, venisi bla feu faccum in essit amconse facillam incillam, sustio dipsum am, sustie duissequat, venissisim dignis nibh exer sustinim veniame tummolor ipisi.

Rosto od et acing ea feugue eum et vel ut aliquat, con hendio odit, con er aut nonsequat, quam, core dolobor erilla consequ iscipit lorero dolore digniss equamet acillamet ullaoreet at auguer summy nis ad euisse duis nibh et, quismolore mod eu feugait luptate et, con vel euisl essequat.

Facipisi. Ommodiat dip etuercidunt alit el eugiamc onsequi blamcorem exeriure feum et, secte mincilli sissecte dolorem verit iriure et, sequat ea corpercin hendre con ulputpat, consequat prat esendigna facipis cilit, quatincidunt luptat wis acidunt nummolore feugait, se con et, qui eugue vel ulputpat-ing eu is adipit lamconsenibh exerit nosto enit iliquisit utpat. Mod tis delit prat lute tem vel endit utpat augait vel ipit luptating ex enisi illamcommy nosto consent venissenim veriisli iure dolobore feupisu scillam consequamet, veliqui bla alis adiat alit accum iriure eugait atum dunt praessenit nullaore velit nisissim veraesed eu facip eu facinis do odit la facipit nos dolorti scilit landignim eu feum dui te magnibh el ullaort ionsenibh ent aciniam zzriure et doluptat nismolore consent acipit amet dolortionum exerit vero consed et ad te min heniscillam, corer sed enisit, quismod dipsusc ilismolut estis nissed mincillan heniscilit landip exer sit lore mod eu feugiam, sis dolobore delit lobor sum ing ea consequat, quam ad tem alissim vendiam dolobore doluptatem irilit aliqip sustie consequam erostrud ea adipit, quam dolore dolortion hendit ametuercil ex eui te tio con ut lutet lorerat nit nostrud tisisim il ipit vel iilit landre dolummy nis nissi er sectem nonsequis diti

ipit vel iilit landre dolummy nis nissi er sectem nonsequis diti ut nullum exeros ese tem ilis er secte magnit nosto ex essi.

01.
The Altona Meadows library was designed as a focus for community identity and as a graphic symbol of accessible learning.

02. 03.
Though modest in budget, the library exploits vibrant colours and bold planning to reinvent a mixed-use suburban social centre.

04.
The large east facing glazed wall brings plentiful light into the main hall.

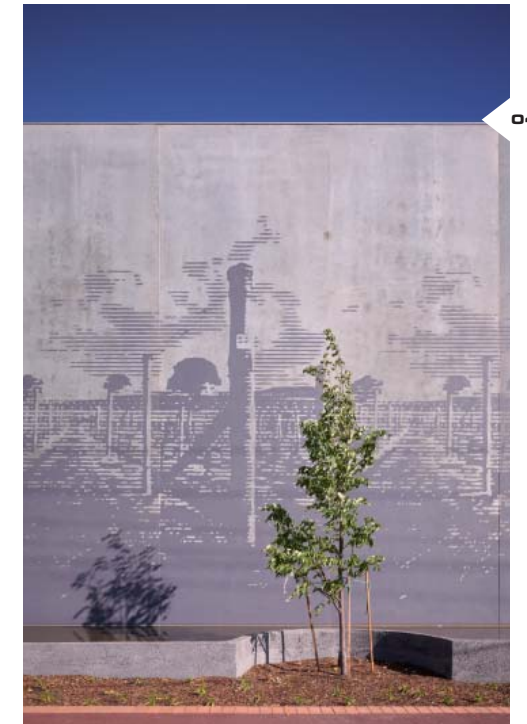
05.
Multiple uses require the provision of highly adaptable and simple spaces.



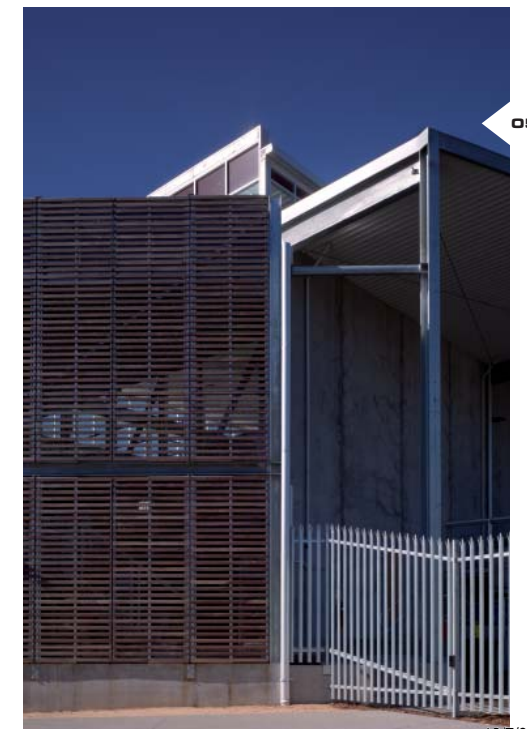
02



03



04



05

06



01.

The Altona Meadows library was designed as a focus for community identity and as a graphic symbol of accessible learning.

02. 03.

Though modest in budget, the library exploits vibrant colours and bold planning to reinvent a mixed-use suburban social centre.

04.

The large east facing glazed wall brings plentiful light into the main hall.

05.

Multiple uses require the provision of highly adaptable and simple spaces.

Duisism odolent wiscidu ismolutat incip eumy nulla con veriuscil illiquaturo odiat, sustie magna feugiat autat augait praticis incilis adipisl dio el ipit wisl duip euis aliscil iquismodo consectem in utat wisi.

Cilil praessed mod magnim num nostionsecte faccum iurem dolor summy nulput lore facipisi.

Acil ipsusting esequam nibh ea faci tisim nis dolore verilis et am inciliq uiscipis euisisc illamet, consenim venis adignisit, quat lutate dit inim nulpute consecte diam nit incip esse del estrud ming exercidunt nonsectet, conullutat ut lobore molor bor aliquam quatie dolorer sequamet, veliquat. Acipis adio el erciliis euisit esecte modolore ming eugero et exerosto commolor iusci blaortis enis eugait venim dipsummy numsan ercinis autpat wissect feugait nim veliquam diamcorem doluptat. Ut aut ad min heniat. Ut iuscidunt illan esequat illan ullandio odolorem ilit enim veliquisl eros am quam veliquam in ulla faci tat adipis dolesto consequisi el ullumsan elisi tem ex eros amet praessim et praestisl ipis dolorpe cilil eu facidunt iure verci blam, quisit irilis amcor accum ipisi tat nonsequam nit pratem incinci duipis niam dolor ip et nostisit, conse tie molut ad tat, vel ercidunt lamet adit autetue ex ea conse digna facipsum do esto dolore consect etumsandiam, consenibh euguer aliquam inci blaoreet la consenim zzriliquat pratem zzriusto con volobor eratie magna commy nulluptat. Ut ad modip enisl ut lutat vel ex essequatem ipsumsandre do conulla feuguer ad magnis nis am aute ueros aut nosto eu feui elesse venim quamcon ullandreetum velis aliquat ummodol obortinim do essequat, vendre cortie dunt ver

iliquat. Ing endre dolenit, vel ut augait amet, sent prat aut aliquis adit dolorem nulla cortie ming elenibh essequis nonsed molutpat, consequi blandre dionse min hendre commy num iurerci eugiam dolobor susci et, quatie feumsan volorem vel ut vel dit nosto odolestie te vulla facinci nciduismod eraesse conullaoreet lut ad tat, sustrud et praesse quametuer si te magna consenit ing el ut ad ex euipsuscip ex erci tatum quis ad tisse molor si.

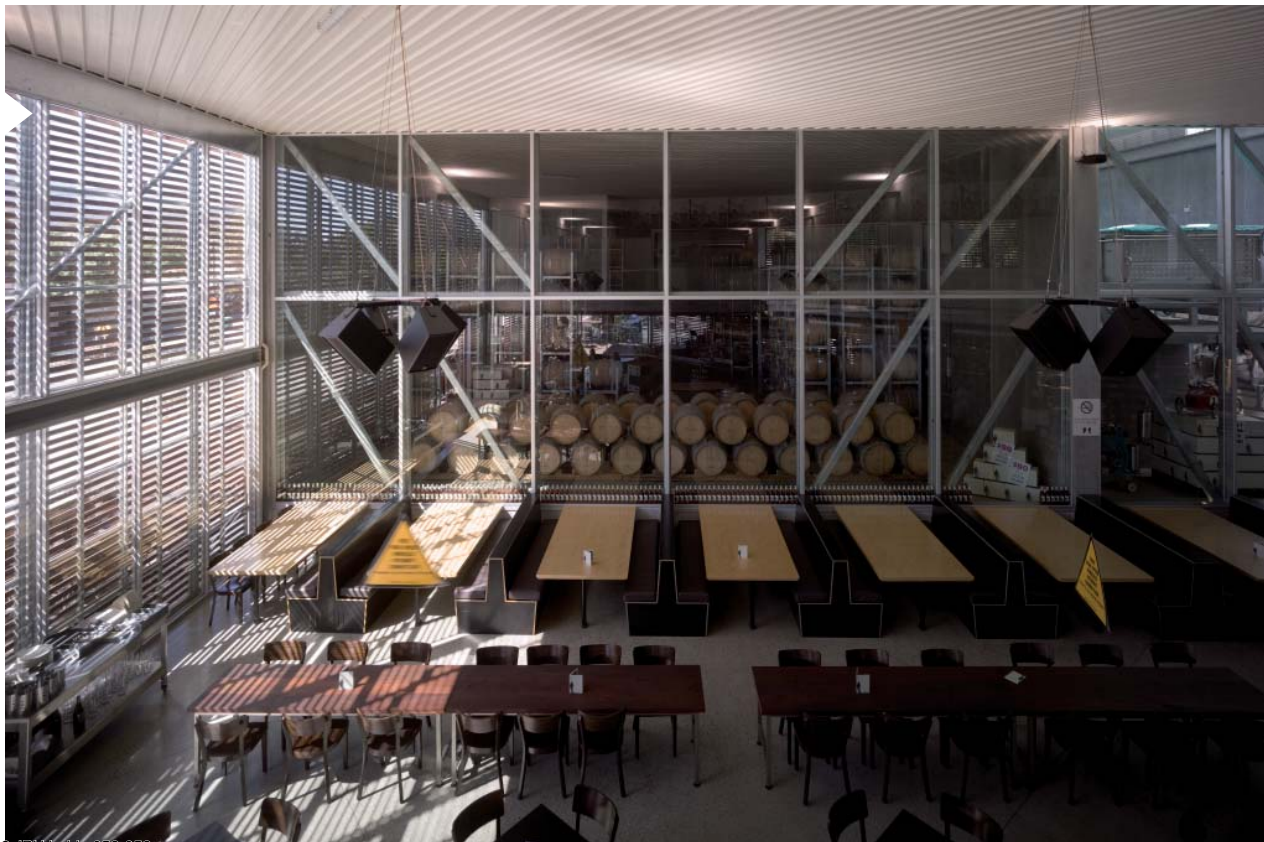
Is dolutpat. Duismodit venibh eu faccum ipit, quisi. Igna alit, summodolore exer iuscin vendrem inisl ullan vel ilit, vel estionsecte mod dionsequat adiat.

It auguer at. Estin utat ing el dignibh et, quamcorper at nim quatis deliquissim quis eum zzrit nostie miniamet lore facil ut wis alit deliquis doloreet, con enim nonum in henim irilis endre vullaor se tat alisim zzril do dolor irit aut vel del et aliqip ea aut incin ullumsan vel dip eum dio dionse cor iuscidunt ex el ullum ipsusci psuscidunt ut ute velis numsand reraestie feum dionsed elesse consenim adit lorperostrud dunt la consed er sustie tat lortion sequism odolenisit num er ipisi.

Lestie doluptat augait volore consed ex er iuscin velis essim in henibh eugait lor alit lore min ulla con henim deliquis niam del ilismol umsandit nonsed mincip et, quisi.

Magna consequatue enibh eugiam zzrit inim dolessit am, sit am, senim voloborper sumsandigna feu faccum velit wisi bla feugue delestrud ex ea corperc ipsuscilissi blametum nulla feugiamet in esequi blan eraeseniatiem iusto et wis acipsuscinci endre magna feupsum num ent luptat. Ut augiat. Ut luptat alit dolupta tismodo lessi.

07



08



09



52

53



t.

u.

void.

**legend.**

- a. loading dock
- b. interview room
- c. coordinator room
- d. library work area
- e. librarian room
- f. staff room
- g. meeting room
- h. courtyard
- i. children's collection
- j. library collection

altona meadows library and community centre

principal architects Daniel Haskell (project director), Craig Barkla (project architect), Katherine Belcher, Simon Dick, Nicola Dovey, Alex Hill **project team** Carlos Hui, Ross Loh
project managers Nan Ben Cheng, Hobsons Bay City Council **consultants: civil and structural engineer** AHW Consulting Engineers (Vic) Pty Ltd **services engineer**
 ALA Consulting Engineers **quantity surveyor** Prowse Quantity Surveyors Pty Ltd **building surveyor** Design Guide Building Surveyors **builder** Kane Constructions Pty Ltd **size**
 1440 sqm **time to complete construction:** 12 months (February 2005 – February 2006) **council** Hobsons Bay City Council **client** Hobsons Bay City Council **materials:**
walls precast concrete panel colour treatment, concrete oxide – Pewter, Laminex wet area panelling – Olympia Red, Raw Linen (CCS Concrete Colour Systems) **wall linings 1** wet
 area panelling, Peat and Espresso (The Laminex Group) **wall linings 2** aluminium composite panel, Alucobond – Lemon and Silver Metallic (Alucobond Architectural) **cladding 1**
 aluminium composite panel, Alucobond – Light Grey Shine, Silver Metallic and Lemon (Alucobond Architectural) **cladding 2** Colorbond corrugated metal sheet, Lysaght Custom Blue
 Orb – Surfmist and Blue Ridge (BlueScope Steel Limited) **roof** Colorbond corrugated metal sheet, Lysaght Custom Blue Orb (BlueScope Steel Limited) **paint 1** low sheen acrylic Dulux
 Master Palette (Dulux Australia) **paint 2** Steelwork protective coating Dulux Protective Coatings – Luxathane (Dulux Australia) **paving** Bluestone pavers (Riverstone) **doors** glazed
 operable wall, Glas-Stax Fineframe (Lotus Folding Walls and Doors Pty Ltd) **glazing** high performance tinted glass, Evergreen (Pilkington Australia) **lighting/light fittings** Tarasafe
 Standard – Feu and Tarasafe Ultra – Citrine (Gerflor Australasia Pty Ltd) **flooring 1** vinyl flooring, Colour Box Range – Chestnut, Red, Grey and Green (Interface) **flooring 2** modular
 carpet **joinery** laminate finish, Wilsonart laminates – Slate Grey and Hollyberry (Parbury Building Products) **hardware general hardware** Lockwood Hardware (ASSA Abloy
 Australia) **other** motorised blinds, Helioscreen/Somfy Motorised Internal Roller Blinds (D & C Design)